

# Sophos Firewall



## Much more than a firewall

Sophos Firewall and the XGS Series appliances are at the heart of the world's best network security platform. Consolidate your network protection with our integrated and extensible platform to secure your hybrid networked world.

## Powerful Protection and Performance

Sophos Firewall includes the latest advanced protection technologies and threat intelligence, such as TLS 1.3 and DPI inspection, machine learning, cloud sandboxing, and DNS Protection. You don't need to compromise on performance thanks to our programmable Xstream Architecture, which offloads important traffic flows and accelerates encrypted traffic inspection as well as VPN and application routing.

## Active Threat Response

Sophos Firewall uniquely integrates with Sophos Endpoint, Sophos XDR, and Sophos MDR to automatically respond to any threat or attack identified by the firewall, the endpoint, or a security analyst. It automatically isolates compromised hosts, preventing lateral movement and versus communication until a threat can be investigated and cleaned up.

## Work From Anywhere

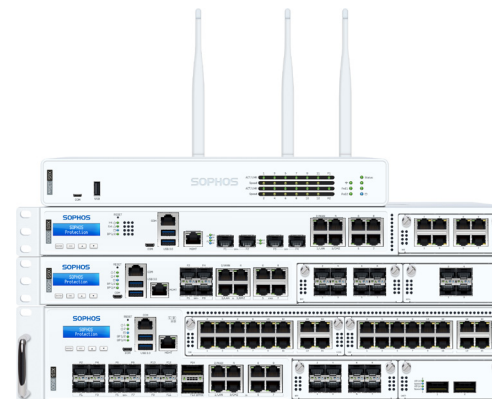
Sophos Firewall offers the ultimate in flexible connectivity and secure access for even the most demanding networks. You get a fully integrated SD-WAN solution and a full suite of secure access products for Zero Trust Network Access, SD-RED edge devices, VPN, switching, and wireless — all managed from Sophos Central.

## Single Console Management

With Sophos Central, you get a single cloud management platform for all your Sophos products, including rich and powerful tools for group firewall management, SD-WAN overlay network orchestration, ZTNA and user management, and infrastructure management for your switches and wireless access points. You also get in-depth dashboards and reports, cross-product integration and automation with other Sophos products, and much more.

## Highlights

- ▶ The world's best visibility, protection, and response
- ▶ Flexible deployment: hardware, cloud, virtual, software
- ▶ Integrates with the entire Sophos ecosystem of cybersecurity solutions
- ▶ Active Threat Response with automated isolation
- ▶ Sophos Central cloud management - at no extra charge
- ▶ Rich on-box and cloud-based reporting included
- ▶ Modular connectivity and SD-WAN options



**SOPHOS**

## Sophos Firewall XGS Series Appliances

The XGS Series models offer excellent performance and connectivity at every price point, to power the protection you need for today’s diverse, distributed, and encrypted networks.

Model		Tech Specs			Throughput			
Model	Form Factor	Ports/Slots [Max Ports]	w-model	Swappable Components	Firewall [Mbps]	IPsec VPN [Mbps]	Threat Protection [Mbps]	Xstream SSL/TLS [Mbps]
XGS 88(w)	Gen.2 Desktop <sup>1</sup>	4/- (4)	Wi-Fi 6	n/a	9,900	6,000	2,000	600
XGS 108(w)		7/- (7)		Optional: 2 <sup>nd</sup> power supply, 5G module	12,500	8,250	2,500	800
XGS 118(w)		10/1(10)			15,500	13,000	3,250	1,100
XGS 128(w)		10/1(10)			19,100	15,050	4,000	1,450
XGS 138*		8/1 (8)	n/a	19,100	6,600	4,750	1,700	
XGS 87(w)	Gen.1 Desktop	5/- (5)	Wi-Fi 5	n/a	3,850	3,000	850	375
XGS 107(w)		9/- (9)		Optional: 2 <sup>nd</sup> power supply	7,000	4,000	1,110	420
XGS 116(w)		9/1 (9)		Optional: 2 <sup>nd</sup> power supply, 3G/4G module, 5G module, Wi-Fi module**	7,700	4,800	2,160	650
XGS 126(w)		14/1 (14)			10,500	5,500	2,700	800
XGS 136(w)		14/1 (14)			11,500	6,350	3,000	950
XGS 2100	1U Short	10/1 (18)	n/a	Optional: external power supply	30,000	17,000	5,000	1,100
XGS 2300		n/a	39,000		20,500	5,550	1,450	
XGS 3100		12/1 (20)	n/a		47,000	25,500	7,400	2,470
XGS 3300		n/a	58,000		31,100	10,000	3,130	
XGS 4300	1U Long	12/2 (28)	n/a	Optional: internal power supply	75,000	62,500	25,200	8,000
XGS 4500		n/a	80,000		75,550	31,850	10,600	
XGS 5500	2U	16/3 (48)	n/a	Built in: redundant power, SSDs, fans	100,000	92,500	46,000	13,500
XGS 6500		20/4 (68)	n/a		120,000	109,800	53,500	16,000
XGS 7500		n/a	160,000		117,000	70,000	19,500	
XGS 8500		22/4 (70)	n/a		190,000	141,000	92,500	24,000

\* Currently not available in Japan

\*\* 2<sup>nd</sup> Wi-Fi module option for XGS 116w, 126w and 136w only

<sup>1</sup> All Gen.2 Desktop models include two or more 2.5G ports

## Xstream Protection Bundle

Sophos Firewall’s Xstream Protection bundle provides all the next-gen protection, performance, and value you need to power the most demanding network. It includes;

<b>Base License</b>	Networking, wireless, Xstream architecture, unlimited remote-access VPN, site-to-site VPN, reporting
<b>Network Protection</b>	Xstream TLS and DPI Engine, intrusion prevention system (IPS), Active Threat Response with Sophos X-Ops threat feeds, Security Heartbeat™, SD-RED management, reporting
<b>Web Protection</b>	Xstream TLS and DPI Engine, web security and control, application control, reporting
<b>Zero-Day Protection</b>	Machine learning, sandboxing, file analysis, reporting
<b>Central Orchestration</b>	SD-WAN/VPN orchestration, Central Firewall Reporting Advanced (30 days <sup>1</sup> ), MDR/XDR data lake connector
<b>DNS Protection</b> (not sold separately)	Cloud-based DNS service for an added layer of high-performance web security and compliance
<b>Bundle-only features</b> (not sold separately)	Active Threat Response with MDR/XDR threat feeds and third-party threat feeds
<b>Enhanced Support</b>	24/7 support, feature updates, advanced replacement hardware warranty for term

<sup>1</sup> 30-day calculation is based on the average traffic volumes for each firewall appliance size. In higher-than-average traffic environments, the report retention rate may be lower.

<sup>2</sup> For active/passive high-availability (HA) configurations, the primary appliance must have an Enhanced Plus Support contract to entitle the passive appliance to advanced RMA.

Full product and licensing details, plus the performance testing methodology are available at [sophos.com/firewall](https://sophos.com/firewall)

For information about related network products see [sophos.com/network](https://sophos.com/network)

United Kingdom and Worldwide Sales  
Tel: +44 (0)8447 671131  
Email: [sales@sophos.com](mailto:sales@sophos.com)

North American Sales  
Toll Free: 1-866-866-2802  
Email: [nasales@sophos.com](mailto:nasales@sophos.com)

Australia and New Zealand Sales  
Tel: +61 2 9409 9100  
Email: [sales@sophos.com.au](mailto:sales@sophos.com.au)

Asia Sales  
Tel: +65 62244168  
Email: [salesasia@sophos.com](mailto:salesasia@sophos.com)